

# Market Mood





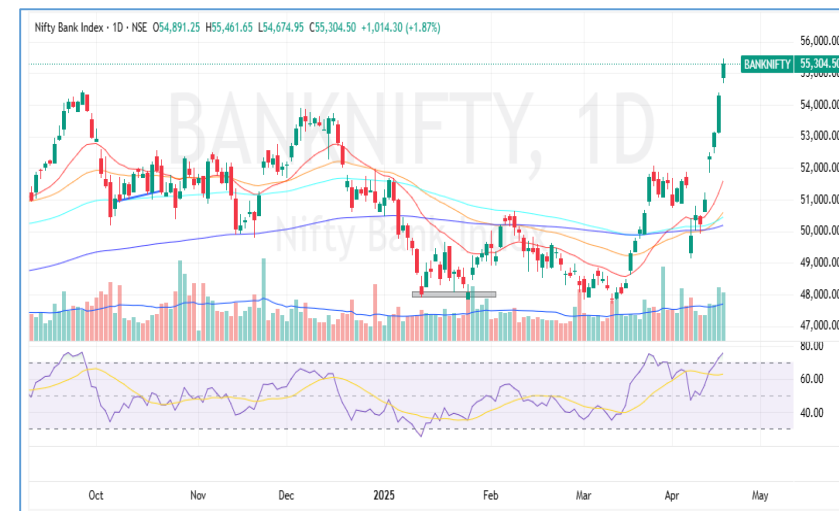
23<sup>rd</sup> April 2025

# Market Mood



<b>LTP</b>	24167.25
<b>R1</b>	24240
<b>R2</b>	24500
<b>S1</b>	24000
<b>S2</b>	23800

- The NIFTY index opened on a flat note today at 24,185.40, gained some early momentum, and faced resistance near 24,240. In the second half, it moved sideways and eventually closed at 24,167.25, marking a modest gain of 0.17%.
- On the daily chart, NIFTY has formed an indecisive candle, signaling potential consolidation in the near term. This view is further supported by the Bollinger Bands, as the index is currently trading close to its upper band, indicating limited upside unless strong momentum builds.
- For today's session, immediate resistance is seen at 24,240, followed by 24,500. On the downside, support is placed at 24,000, followed by 23,800.



<b>LTP</b>	55647.20
<b>R1</b>	56000
<b>R2</b>	56200
<b>S1</b>	55500
<b>S2</b>	54000

- The BANKNIFTY index opened on a flat note at 51,200.40 and traded positively during the first half of the session. After facing resistance near 55,960, it settled at 55,647.20, registering a gain of 0.62%.
- On the daily chart, BANKNIFTY formed a strong bullish candle, indicating sustained buying interest and market strength. This sentiment is further supported by the Bollinger Bands, which align with the ongoing positive momentum.
- The trend remains positive as long as BANKNIFTY holds above the 55,000 mark. Resistance on the upside is expected around 56,000, with the next hurdle near 56,200. Support on the downside is seen at 55,500, followed by a stronger base around 54,000.

## Global Market:

	<b>Dow Jones Futures</b> <small>CFD</small>	39,672.65	485.67	1.24
23 Apr, 2025   08:23 IST				
	<b>S&amp;P 500</b> <small>CFD</small>	5,287.76	129.56	2.51
23 Apr, 2025   01:29 IST				
	<b>Nasdaq</b> <small>CFD</small>	16,300.42	429.52	2.71
23 Apr, 2025   01:29 IST				
	<b>FTSE</b>	8,328.60	52.94	0.64
22 Apr, 2025   21:20 IST				
	<b>CAC</b>	7,326.47	40.61	0.55
22 Apr, 2025   21:20 IST				
	<b>DAX</b>	21,293.53	87.67	0.41
22 Apr, 2025   21:45 IST				

## Sentiment Gauge



Sideways to Positive

## FII - DII Activities:

Activity	FII (Cr)	DII (Cr)
Cash	1290.43	-885.63
Adv/Dec		
Advance	Decline	A/D Ratio
122	100	1.22

23<sup>rd</sup> April 2025

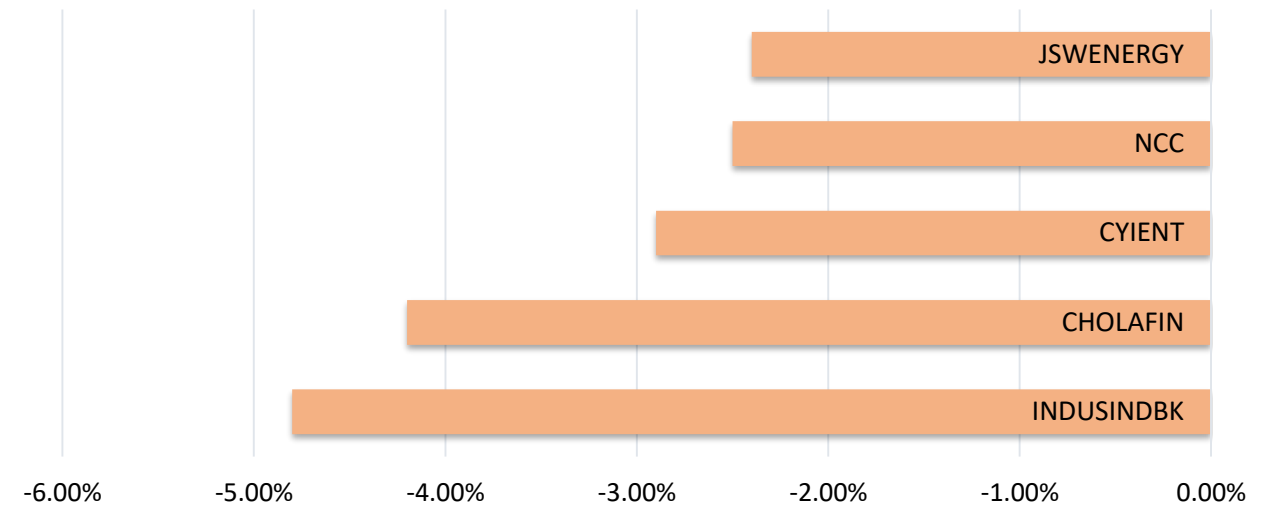
# Market Mood



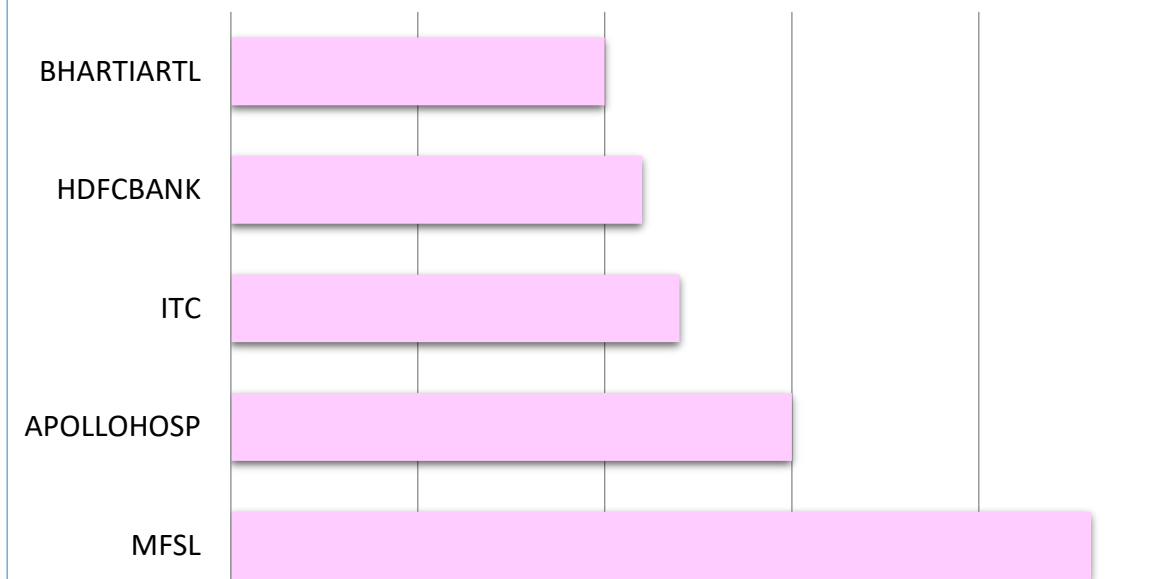
## PRICE UP



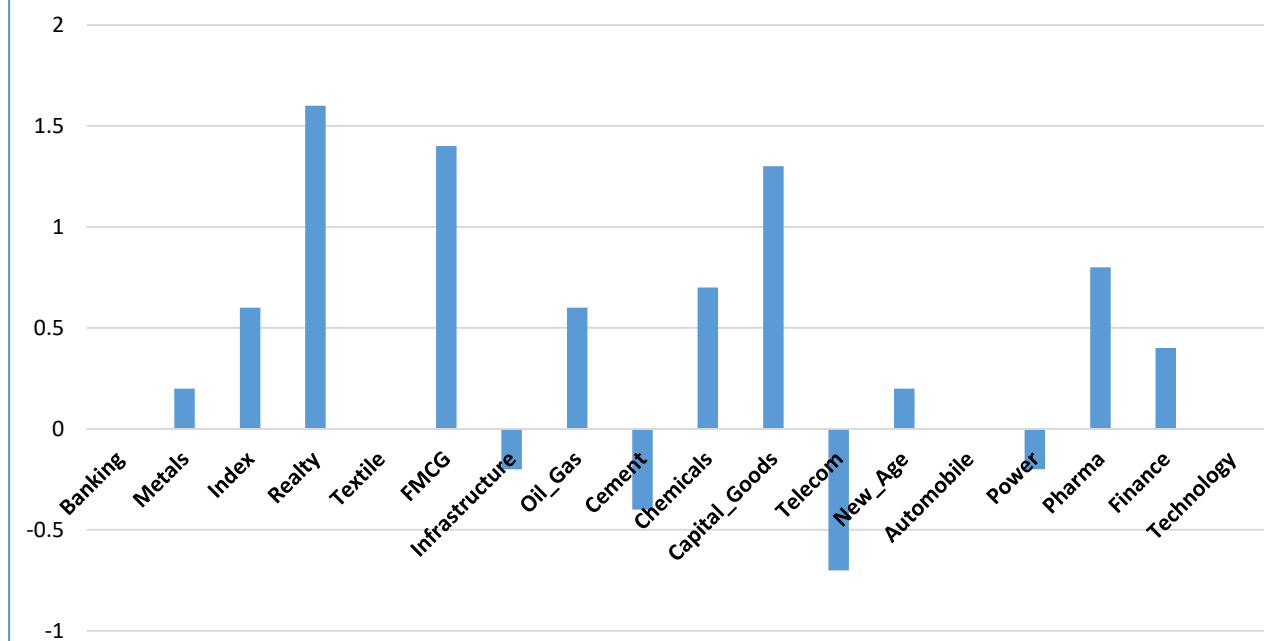
## PRICE DOWN



## DELIVERY HEAVY



## SECTOR



Results Calendar

Date	RESULTS	Expected	Previous
23 <sup>rd</sup> Apr 25	LTIM	-	-
23 <sup>rd</sup> Apr 25	SYNGENE INTERNATIONAL	-	-
23 <sup>rd</sup> Apr 25	BAJAJ HOUSING FINANCE	-	-
23 <sup>rd</sup> Apr 25	DALMIA BHARAT	-	-

23<sup>rd</sup> April 2025

# Market Mood



## CALL OF THE DAY



### BIGBLOC CONSTRUCTION (Intraday pick)

Buy above: 74; SL: 72.8; TGL: 76.10

Bigbloc Construction has successfully broken out of a consolidation range and a triple bottom chart pattern on the daily timeframe, marked by a strong bullish candle and volume above the 20-day average—indicating growing bullish sentiment in the stock. Technically, the stock is trading above its 20-day EMA, signaling a developing bullish trend. Additionally, the Relative Strength Index (RSI) stands at 64.67 and is moving upward, highlighting strengthening momentum and supporting the positive outlook for the stock.

## DELIVERY CALL



### PRAKASH INDUSTRIES (Delivery pick )

Buy above: 180; SL: 174.50 (Daily Closing Basis); Target: 191/192

Prakash Industries has successfully broken out of a classic cup and handle chart pattern on the daily timeframe, supported by a strong bullish candle and volume above the 20-day average—signaling growing bullish interest in the stock. The stock is trading above its 20, 50, 100, and 200-day EMAs, reinforcing a well-established uptrend. Moreover, the Relative Strength Index (RSI) is at 65.64 and moving upward, indicating rising momentum and strengthening the bullish outlook for the stock.



23<sup>rd</sup> April 2025

# Market Mood



## Nifty 50 Snapshot

Script	LTP	CHNG	%CHNG	R1	R2	S1	S2
NIFTY 50	24,167.25	41.7	0.17	24,278	24388.7	24,056.53	23,945.80
ITC	432.85	10	2.36	441	449.3624	424.59	416.34
HINDUNILVR	2,403.00	52	2.21	2,441	2478.058	2,365.47	2,327.94
HDFCBANK	1,960.00	32.9	1.71	1,989	2018.428	1,930.79	1,901.57
JIOFIN	250.6	4.22	1.71	256	260.4084	245.70	240.79
M&M	2,811.10	47.1	1.7	2,857	2902.403	2,765.45	2,719.80
TATACONSUM	1,138.60	17.6	1.57	1,160	1181.888	1,116.96	1,095.31
BEL	303.5	3.55	1.18	307	310.4718	300.01	296.53
KOTAKBANK	2,265.00	23.6	1.05	2,308	2350.459	2,222.27	2,179.54
JSWSTEEL	1,044.90	10.9	1.05	1,066	1087.842	1,023.43	1,001.96
ETERNAL	236.57	2.33	0.99	243	249.3098	230.20	223.83
CIPLA	1,523.00	11.9	0.79	1,543	1563.683	1,502.66	1,482.32
SBIN	821.3	4.6	0.56	836	850.0206	806.94	792.58
NESTLEIND	2,409.40	10	0.42	2,428	2447.09	2,390.55	2,371.71
ICICIBANK	1,414.00	4.2	0.3	1,427	1439.01	1,401.49	1,388.99
HCLTECH	1,485.90	3.9	0.26	1,508	1530.834	1,463.43	1,440.97
SUNPHARMA	1,748.40	3.5	0.2	1,762	1775.175	1,735.01	1,721.62
TITAN	3,341.30	5.2	0.16	3,365	3389.051	3,317.42	3,293.55
TATAMOTORS	630.5	0.45	0.07	635	639.9958	625.75	621.00
ADANIENT	2,442.90	0.2	0.01	2,472	2501.893	2,413.40	2,383.91
MARUTI	11,744.00	-1	-0.01	11,862	11979.03	11,626.49	11,508.97
ULTRACEMCO	11,917.00	-17	-0.14	12,019	12121.53	11,814.73	11,712.47
DRREDDY	1,175.10	-2.3	-0.2	1,187	1198.963	1,163.17	1,151.24
TECHM	1,370.10	-3.4	-0.25	1,392	1413.545	1,348.38	1,326.65
TCS	3,312.50	-9.1	-0.27	3,337	3361.966	3,287.77	3,263.03

23<sup>rd</sup> April 2025

# Market Mood



Script	LTP	CHNG	%CHNG	R1	R2	S1	S2
COALINDIA	399.4	-1.1	-0.27	746	1093.322	52.44	-294.52
EICHERMOT	5,789.00	-21.5	-0.37	10,821	15853.47	756.77	-4,275.47
BAJFINANCE	9,235.00	-38.5	-0.42	17,266	25297.67	1,203.66	-6,827.67
SHRIRAMFIN	700.05	-2.95	-0.42	1,309	1918.055	91.05	-517.95
HINDALCO	619.15	-2.85	-0.46	1,158	1696.894	80.28	-458.59
RELIANCE	1,289.00	-6.5	-0.5	2,411	3533.331	166.83	-955.33
HDFCLIFE	708.6	-3.6	-0.51	1,326	1942.622	91.59	-525.42
SBILIFE	1,619.60	-8.9	-0.55	3,030	4440.761	209.02	-1,201.56
AXISBANK	1,215.20	-7.8	-0.64	2,275	3334.092	155.75	-903.69
ASIANPAINT	2,428.00	-17	-0.7	4,546	6663.569	310.22	-1,807.57
GRASIM	2,737.70	-19.2	-0.7	5,126	7513.509	349.80	-2,038.11
ONGC	248	-1.78	-0.71	465	681.254	31.37	-185.25
LT	3,254.00	-26.5	-0.81	6,095	8936.874	412.56	-2,428.87
TATASTEEL	1,37.97	-1.21	-0.87	259	379.7952	17.06	-103.86
TRENT	5,309.00	-51	-0.95	9,952	14594.03	666.49	-3,976.03
APOLLOHOSP	7,071.50	-71	-0.99	13,258	19444.13	885.18	-5,301.13
NTPC	360.45	-4.1	-1.12	677	992.8695	44.24	-271.97
ADANIPTS	1,228.20	-14.9	-1.2	2,305	3382.494	151.05	-926.09
BAJAJ-AUTO	8,135.00	-112.5	-1.36	15,279	22422.58	991.21	-6,152.58
BAJAJFINSV	2,074.00	-29.5	-1.4	3,896	5718.923	251.54	-1,570.92
BHARTIARTL	1,848.20	-35.2	-1.87	3,480	5112.504	216.05	-1,416.10
WPIRO	234	-4.45	-1.87	441	648.6748	26.66	-180.67
INFY	1,423.00	-28	-1.93	2,681	3938.314	165.34	-1,092.31
HEROMOTOCO	3,837.90	-79.1	-2.02	7,232	10625.44	444.13	-2,949.64
POWERGRID	313.25	-6.75	-2.11	591	869.4241	35.16	-242.92
INDUSINDBK	788.55	-39.65	-4.79	1,509	2228.635	68.51	-651.54

**HARSHITA DARAK**  
**Technical Research Analyst**

Disclosure: M/s. Bonanza Portfolio Ltd here by declares that views expressed in this report accurately reflect view point with subject to companies/securities. M/s. Bonanza Portfolio Ltd has taken reasonable care to achieve and maintain independence and objectivity in making any recommendations. The Analysts engaged in preparation of this Report or his/her relative: - (a) do not have any financial interests in the subject company mentioned in this Report; (b) do not own 1% or more of the equity securities of the subject company mentioned in the report as of the last day of the month preceding the publication of the research report; (c) do not have any material conflict of interest at the time of publication of the Report. The Analysts engaged in preparation of this Report:- (a) have not received any compensation from the subject company in the past twelve months; (b) have not managed or co-managed public offering of securities for the subject company in the past twelve months; (c) have not received any compensation for investment banking or merchant banking or brokerage services from the subject company in the past twelve months; (d) have not received any compensation for products or services other than investment banking or merchant banking or brokerage services from the subject company in the past twelve months; (e) has not received any compensation or other benefits from the subject company or third party in connection with the Report; (f) has not served as an officer, director or employee of the subject company; (g) is not engaged in market making activity for the subject company.

M/s. Bonanza Portfolio Ltd is a registered Research Analyst under the regulation of SEBI, the year 2014. The Regn No. INH100001666 and research analyst engaged in preparing reports is qualified as per the regulation's provision.

Disclaimer: This research report has been published by M/s. Bonanza portfolio Ltd and is meant solely for use by the recipient and is not for circulation. This document is for information purposes only and information / opinions / views are not meant to serve as a professional investment guide for the readers. Reasonable care has been taken to ensure that information given at the time believed to be fair and correct and opinions based thereupon are reasonable, due to the nature of research it cannot be warranted or represented that it is accurate or complete and it should not be relied upon as such. If this report is inadvertently send or has reached to any individual, same may be ignored and brought to the attention of the sender. Preparation of this research report does not constitute a personal recommendation or take into account the particular investment objectives, financial situations, or needs of individual clients. Past performance is not a guide for future performance. This Report has been prepared on the basis of publicly available information, internally developed data and other sources believed by Bonanza portfolio Ltd to be reliable. This report should not be taken as the only base for any market transaction; however this data is representation of one of the support document among other market risk criterion. The market participant can have an idea of risk involved to use this information as the only source for any market related activity.



The distribution of this report in definite jurisdictions may be restricted by law, and persons in whose custody this report comes, should observe, any such restrictions. The revelation of interest statements integrated in this analysis are provided exclusively to improve & enhance the transparency and should not be treated as endorsement of the views expressed in the analysis. The price and value of the investments referred to in this report and the income from them may go down as well as up. Bonanza portfolio Ltd or its directors, employees, affiliates or representatives do not assume any responsibility for, or warrant the accuracy, completeness, adequacy and reliability of such information / opinions / views.

While due care has been taken to ensure that the disclosures and opinions given are fair and reasonable, none of the directors, employees, affiliates or representatives of M/s. Bonanza portfolio Ltd shall be liable. Research report may differ between M/s. Bonanza portfolio Ltd RAs and other companies on account of differences in, personal judgment and difference in time horizons for which recommendations are made. Research entity has not been engaged in market making activity for the subject company. Research analyst has not served as an officer, director or employee of the subject company. Research analyst has not received any compensation/benefits from the Subject Company or third party in connection with the research report.

Bonanza Portfolio Ltd. Bonanza House, Plot No. M-2, Cama Industrial Estate. Walbhat Road, Goregaon (E), Mumbai – 400063  
Web site: <https://www.bonanzaonline.com> SEBI Regn. No.: INZ000212137 BSE CM: INB 011110237 | BSE F&O: INF 011110237 |  
MSEI: INE 260637836 | CDSL: 120 33500 | NSDL: a) IN 301477 | b) IN 301688 (Delhi) PMS: INP 000000985 | AMFI: ARN -0186